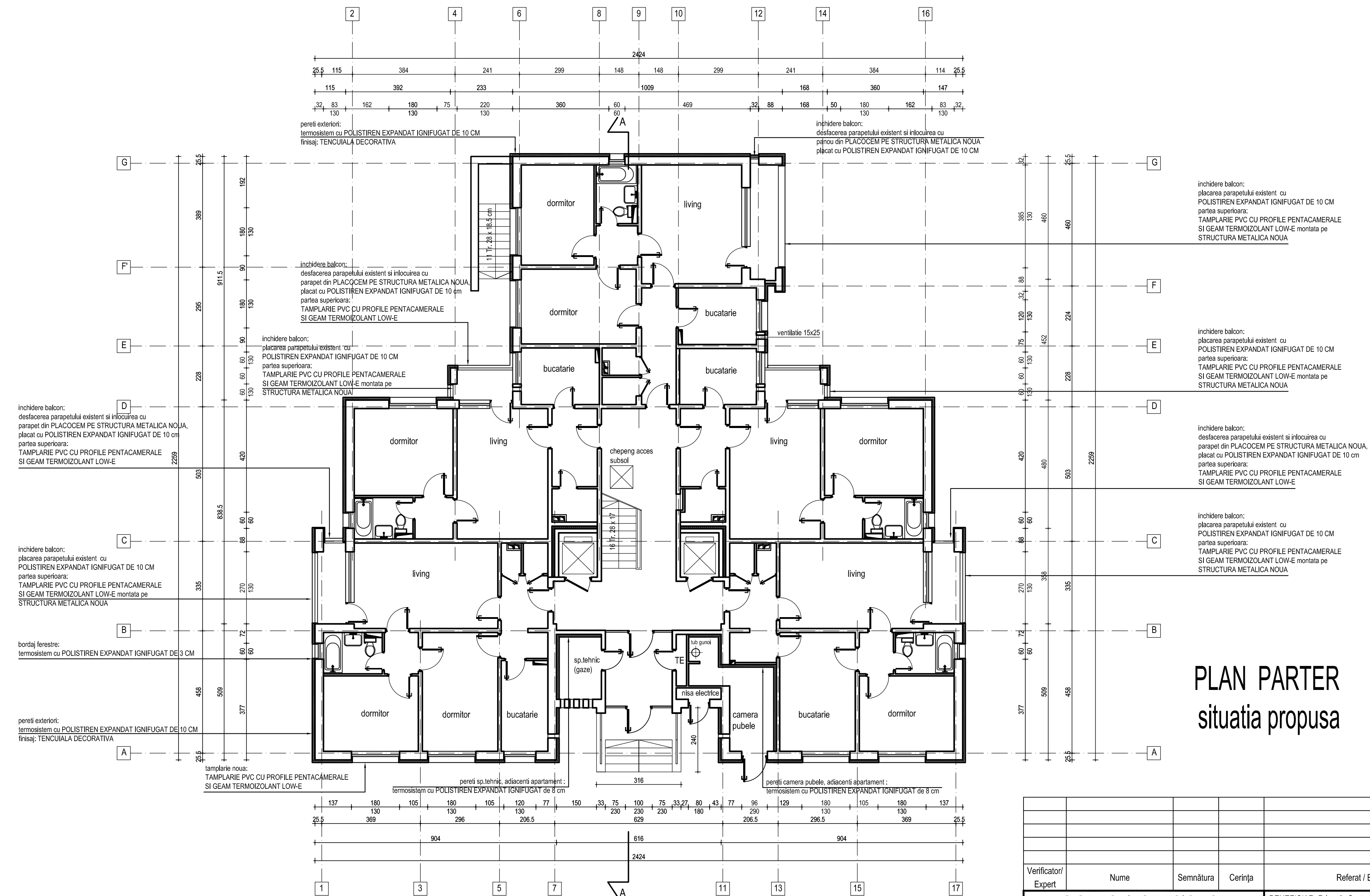


CLASA DE IMPORTANTA A CONSTRUCTIEI III
CATEGORIA "C" DE IMPORTANTA
GRADUL II DE REZISTENTA LA FOC

AC = 386.00 mp
ADC = 4676.00 mp
AU = 3834.00 mp

ap. 2 camere = 23
ap. 3 camera = 32
55 apartamente

[illegible]